



Efficient. Flexible.  
Genuine.



# GenTek™

Genuine Restorative  
Components





# GenTek Genuine Restorative Components

Premium implants deserve premium prosthetic components. For long-term clinical success, it is essential that the interface between the implant and abutment are designed to work together. This is required to ensure a robust and stable interface that aims at delivering the long-term aesthetic and physical integrity that patients demand.

The GenTek Restorative Components are the solution for anyone who uses genuine ZimVie Dental Implants. As part of an open digital workflow, the genuine connection TiBases and Pre-Abutment Blanks are aimed at ensuring the highest product quality and a precise fit through the integration of proven ZimVie Dental Technologies. GenTek Restorative Components are available for ZimVie Dental Implant Systems: Certain®, External Hex, TSV®/Trabecular Metal®, Eztetic®, T3® PRO, and TSX™.





# GenTek™

ZimVie  
Genuine  
Components

## Features and Benefits

- Genuine connection components, designed and manufactured to minimize the micro-gaps and micro-movement for a robust and stable interface between the implant and abutment.
- GenTek TiBases, Pre-Abutment Blanks, and accessories are part of a complete and open digital workflow.
- Genuine connection TiBases are compatible with CEREC® blocks, and aim to meet your Sirona® chairside workflow need.





# GenTek TiBases

## Get restorative flexibility, efficiency, and strength

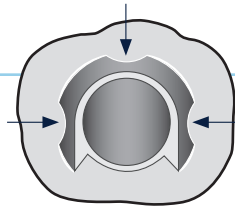
The genuine connection TiBase with angled screw channel provides access for ZimVie Dental's Implant systems, Certain, Eztetic, TSV, Trabecular Metal, T3 PRO, and TSX, with multiple collar heights.

**Achieve efficiency to your CAD/CAM restoration workflow with a singular TiBase that provides flexibility of channel angulation, collar heights, and adjustable post height options.** A genuine connection TiBase provides the performance you expect through ZimVie Dental's proven Friction-Fit™ and SureSeal™ Technologies when mated with a ZimVie Dental Implant.



### Anti-rotation feature

Three continuous anti-rotation notches over the entire length of the post ensures better centering and greatly reduces rotational movement of the crown to TiBase.

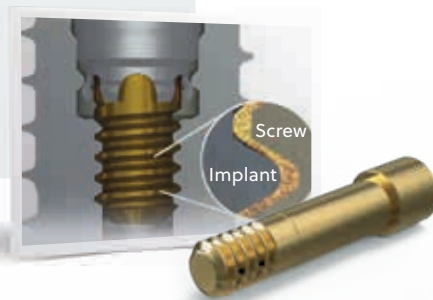


### Retention grooves

For simplified cementation

### SureSeal Technology for the Certain Implant System

- Superior seal integrity at the interface between the implant and abutment
- Combination of the proprietary Gold-Tite® Screw and Certain Internal Connection
- Minimizes abutment micromotion and reduces potential microleakage



### Connections

Available for ZimVie Dental's Implant Connections.



### Enabled angles for versatility<sup>1</sup>

Position the angled screw channel anywhere from 0 to 25° for improved aesthetics in anterior cases and for better access in challenging inter-arch spaces.

### Flexible post height for the body

A singular TiBase provides various post height options for individualized solutions.

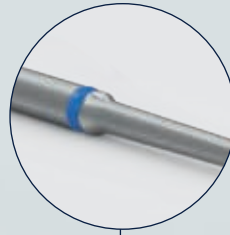


### NEW: Additional collar heights



### Non engaging TiBases for bridges

GenTek Angulated Screw Channel TiBases are also available for bridges. The non-engaging connection allows for the freedom of rotation ideal for making bridges.

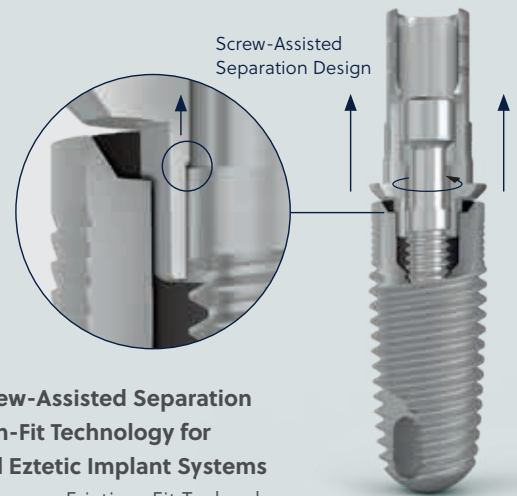


One driver for compatible ZimVie Dental Connections

Hexalobular screwdriver is available in three different lengths (21 mm, 28 mm, 36 mm). The hexalobular design allows the universal use with all GenTek Titanium and Gold-Tite Hexalobular Screws.

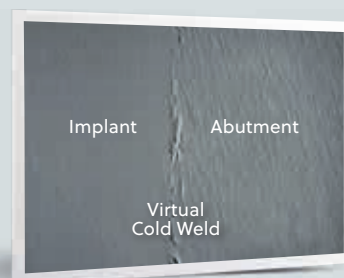
### Hexalobular screwdrivers and screws

Screwdrivers now feature a hexalobular design to allow for universal use, regardless of the ZimVie Dental Implant connection. Screwdrivers are available in three different lengths to accommodate a wide range of cases, and include an in-groove designed for dental ring placement for easy length identification.<sup>2</sup> Screws now contain a new hexalobe design to be used in conjunction with the drivers.<sup>3</sup>



### NEW, patent-pending Screw-Assisted Separation Design, containing Friction-Fit Technology for TSV, Trabecular Metal, and Eztec Implant Systems

- The new design maintains our Friction-Fit Technology eliminating the use of an additional abutment removal tool on angulated prosthetic solutions.
- The new screw assists in releasing the friction between the TiBase and the implant during the unscrewing processes.



Higher magnification of the virtual cold weld between abutment and implant

<sup>1</sup> Engaging TiBase: position of the channel is limited by the internal hex, every 30°. For multi-unit, no restrictions.  
<sup>2</sup> Silicone rings not provided and not sold by ZimVie Dental.  
<sup>3</sup> Hexalobular screws are required for the ASC solutions.  
<sup>4</sup> Binon PP. The evolution and evaluation of two interference-fit implant interfaces. Postgraduate Dent. 1996;3:3-13

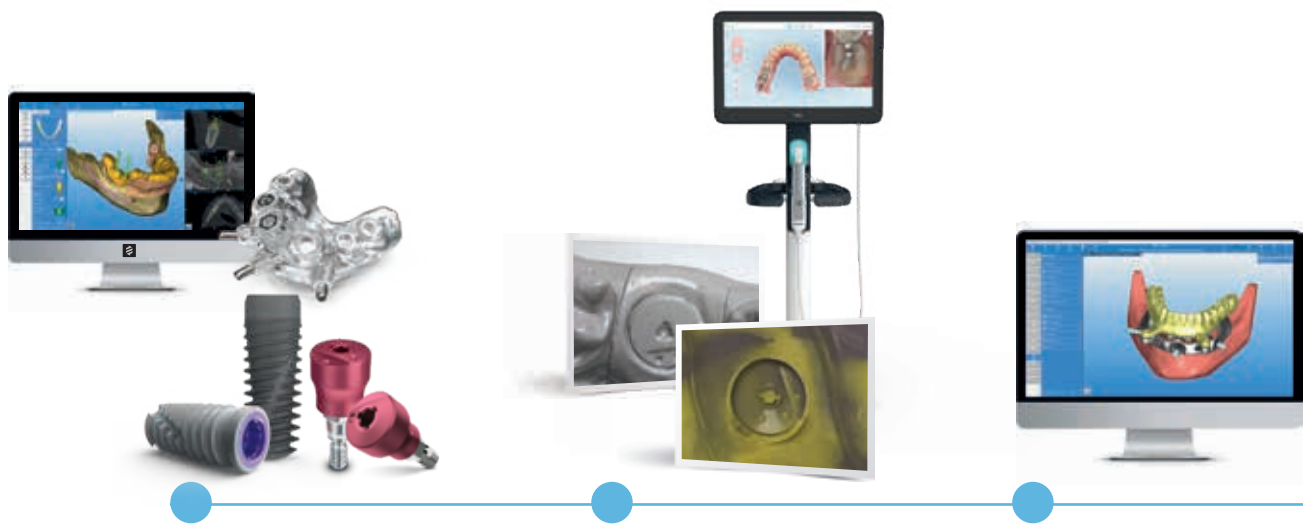


# NEW: GenTek TiBases and Encode® Emergence

## Compatibility with Encode Emergence Healing Abutment

Angulated Screw Channel TiBases with variable collar heights for final custom restoration are designed to mimic the profile radius of Encode Emergence. Encode Emergence Technology eliminates the healing abutment and impression coping or scanbody swapping process, while delivering soft-tissue healing with a natural emergence profile. The compatible Angulated Screw Channel TiBases can be designed to match the patient's anatomy using the CAD libraries, thereby producing a natural emergence profile through the soft-tissue.

Encode Emergence  
**3-in-1**  
Healing Abutment  
Impression Coping  
Scanbody



### PLACE

Place a ZimVie Dental Implant with an Encode Emergence Healing Abutment.

### HEAL AND SCAN

After tissue maturation, take a digital or traditional impression of the Encode Emergence Healing Abutment and send it to your preferred lab partner.

### DECODE AND DESIGN

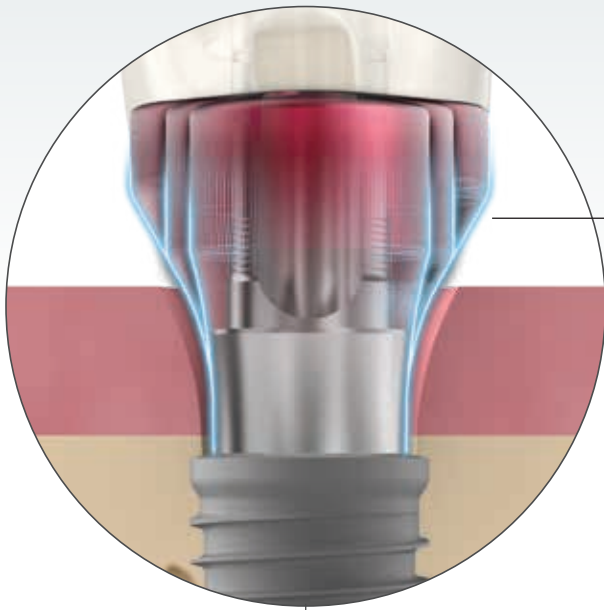
The laboratory decodes<sup>1</sup> the Encode Emergence Healing Abutment on RealGUIDE™ and proceeds with the CAD Design.<sup>2,3</sup>

<sup>1</sup> Download the free version of RealGUIDE and decode immediately your Encode Emergence Healing Abutment  
<sup>2</sup> Patient Specific Abutment CAD design requires GenTek Library. GenTek Library can be downloaded for free on RealGUIDE, exocad, 3Shape & Dental Wings CAD Softwares.  
<sup>3</sup> Duplication possible between the margin of the TiBase and the top of the soft tissue for RealGUIDE CAD subscribers.





Mimic the same Encode Emergence shape all across the soft-tissue



## COMPATIBLE EMERGENCE PROFILE RADIUS

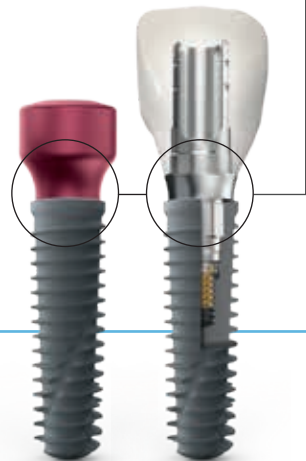


Download FREE Libraries for TiBases and other components

RealGUIDE™  
UNIVERSAL OPEN SYSTEM

3shape exocad

dental wings



### RESTORE

Select between different GenTek consumables designed to match the patient's anatomy, producing a natural emergence profile though the soft-tissue.

### SMILE

The finished prosthesis is ready to be placed. You and your patient can enjoy a precise, aesthetic result and above all, a radiant smile!



# GenTek TiBases Milling Block Compatible



GenTek TiBases are available with genuine connections for the following ZimVie Dental Implant Systems: Certain, External Hex, TSV/Trabecular Metal, Eztetic, T3 PRO and TSX. A genuine connection TiBase aims to provide the performance you expect through ZimVie Dental's proven Friction-Fit and SureSeal Technologies when mated with a ZimVie Dental Implant.

### GenTek TiBase main features and benefits:

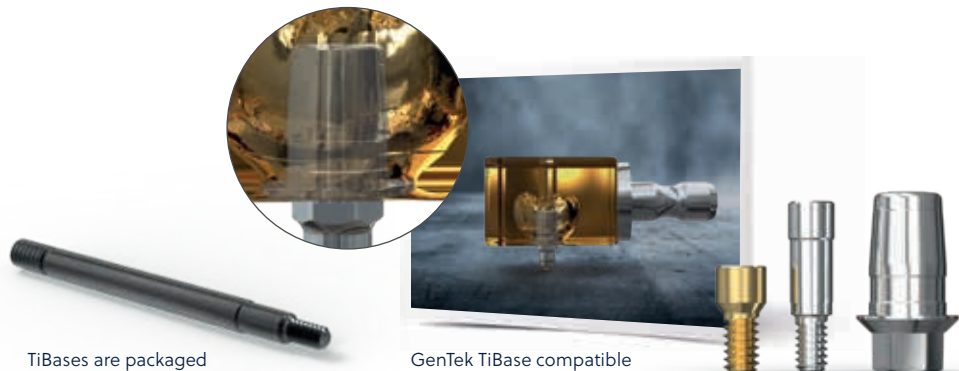
- High restorative flexibility for both screw- and cement-retained options
- Indicated for use for single-unit, multi-unit, and full-arch restorations utilizing digital or traditional workflows
- 4.7 mm in height, meeting geometrical requirements for Sirona CEREC blocks for CEREC Chairside Milling and in-Lab CAD/CAM solutions
- Compatible with oxide, glass, and hybrid ceramics, and PMMA providing a variety of restoration options
- Libraries for TiBases and other components available for Zfx CAD, RealGUIDE<sup>1</sup>, 3Shape, exocad, and Dental Wings CAD
- Zimmer Biomet branded to indicate a genuine connection. Look for the "Zimmer Biomet" marking at the base of the TiBases to verify authenticity



**SureSeal**  
Technology for Certain  
Implant System

**Friction-Fit**  
Technology for TSV,  
Trabecular Metal,  
and Eztetic Implant  
System

The Gluing Screw, provided with each GenTek TiBase, protects the screw channel from the inflow of glue into the screw channel while gluing the prosthetic restoration.



TiBases are packaged with a GenTek Gluing Screw.

GenTek TiBase compatible with Milling Block



## Features by TiBase option



Characteristics	NEW: GenTek TiBases	GenTek TiBases Milling Block Compatible
<b>Restorative Platform</b>	TSX, TSV/Trabecular Metal, Eztetic, Certain	TSX, TSV/Trabecular Metal, Eztetic, Certain, External Hex
<b>Sizes</b>	For all Implant Platforms <sup>3</sup>	For all Implant Platforms <sup>2</sup>
<b>Angulations</b>	Yes (up to 25°)	None
<b>Post Height</b>	7 mm with 2 cutting grooves, also allowing for 5.7 mm and 4.5 mm heights	4.7 mm post height with one cutting groove at 4.0 mm height
<b>Mimics Encode Emergence Profile Radius</b>	Yes, 1.3 mm and 2.6 mm CH for TSV and Certain Connection, 1.7 mm and 2.6 mm for Eztetic Connection	No
<b>Implant Connection and Multi-Unit Abutment Level TiBases</b>	Implant Level connections only	Yes
<b>Ceramic Milling Block Compatible</b>	No	Yes
<b>Multiple Collar Heights</b>	Yes <sup>4</sup>	No
<b>Gluing Screw</b>	Yes	Yes
<b>Original Screw</b>	Yes	Yes
<b>Libraries</b>	RealGUIDE, exocad, 3Shape, Dental Wings	RealGUIDE, exocad, 3Shape, Dental Wings

<sup>1</sup> GenTek is currently available in RealGUIDE for Prosthetic driven Surgical Planning functionality. CAD Design functionality will be available soon.

<sup>2</sup> Milling block compatible TiBases for Certain, External Hex and TSV Implant Systems. 6.0 mm TiBase is not offered for Certain and External Hex. 5.0 mm GenTek TiBase can be used on a 6/5 mmD Certain Implant.

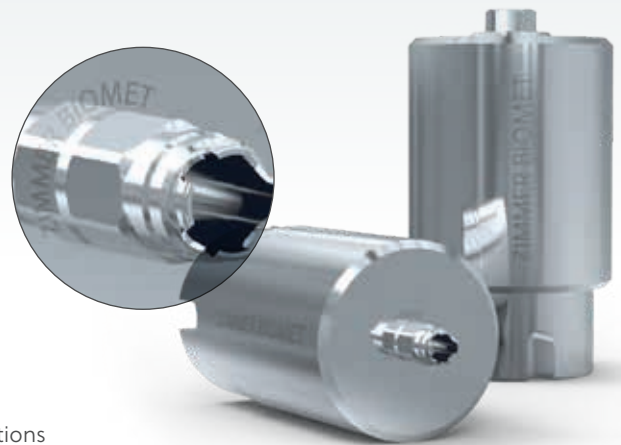
<sup>3</sup> For Certain and TSV Implant Systems, 6.0 mm TiBase is not offered. Certain 5.0 TiBase can be used on a 6/5 mmD Certain Implant.

<sup>4</sup> Certain and TSV connections – 0.3 mm, 1.3 mm and 2.6 mm Eztetic connection collar heights would be 1.0 mm, 1.75 mm and 2.6 mm.



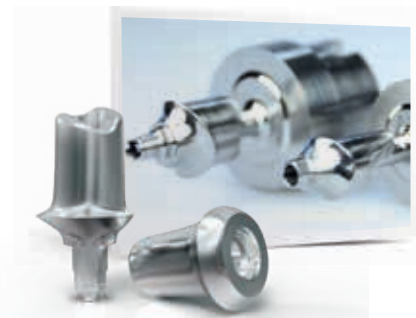
# GenTek Pre-Abutment Blanks

The GenTek Pre-Abutment Blanks enable dental technicians to produce one-piece customized titanium abutments in their own laboratory without compromising connection quality and restoration performance. GenTek Pre-Abutment Blanks are available for the following ZimVie Dental Implant Systems: Certain, External Hex, TSV/Trabecular Metal, Eztetic, T3, T3 PRO, and TSX.



## GenTek Pre-Abutment Blanks main features and benefits:

- The blanks are pre-fabricated with genuine connections to ensure an accurate fit and superior performance with the implant connection
- Processing flexibility: Compatible with a variety of ZimVie Pre-Abutment Blank Holders and all milling machines that work with Medentika PreFace® Abutment Holders
- Zimmer Biomet branded to indicate a genuine connection. Look for the "Zimmer Biomet" marking at the base of the Pre-Abutment Blanks to verify authenticity



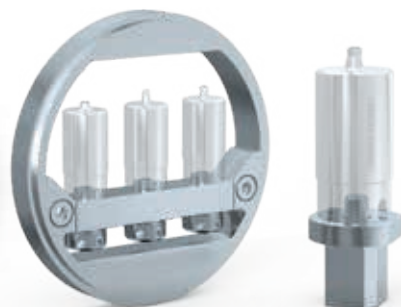
The patient-specific abutment and crown will be manufactured with restorative components.



Zfx Pre-Abutment Multi-Blank Holder allows the positioning and management of up to 12 blocks.



GenTek Pre-Abutment Blanks are compatible with Medentika holders. (CAM update required)



GenTek Pre-Abutment Standard Holder and Pre-Abutment Adapter for GCER Holders.



# GenTek Scanbodies and Digital Scan Analogs

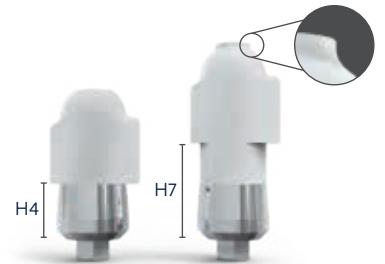
## GenTek Scanbodies

The scan is the basis of every CAD/CAM restoration. Fitting perfectly, thanks to a genuine connection, GenTek Scanbodies lay the foundation for a highly precise digitization of the real implant position, whether acquired with an intraoral scanner or a desktop scanner.



### GenTek Scanbodies main features and benefits:

- Genuine titanium connection base ensures a precise fit with the implant connection for optimal scanning results
- Body constructed of PEEK material provides a favorable surface for optical scanners, eliminating the need for scan spray, and resulting in highly accurate scanning data acquisition that contributes to a precise fit of the final prosthetic work
- Equipped with an innovative code system, it offers automatic recognition of the implant type, eliminating potentially error-prone manual work steps
- The Zfx Torque Wrench is required for tightening the GenTek Desktop Scanbodies. It features a torque control mechanism that ensures proper tightening torque



The 7 mm H scanbody has an additional step to avoid any confusion between the two heights when designing in the CAD software.



## GenTek Digital Scan Analogs

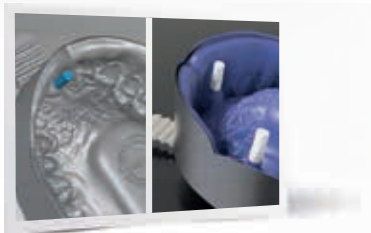
The GenTek Digital Scan Analogs, featuring proprietary anti-rotation functionality, is a first-of-its-kind 3-in-1 digital analog:

- As digital analogs in 3D printed models
- As a scan body, allowing for direct scanning of a traditional patient impression eliminating the need for stone models<sup>1</sup>
- As a conventional analogs used in a stone model

The GenTek Digital Scan Analogs feature a genuine connection, replicating the position and orientation of the implant and leading to a more accurate fit and design of the restoration. A placement tool is also available, enabling the analog to be installed with ease and accuracy.



A placement tool enables the analog to be installed with ease and accuracy.



Zfx Digital-intraModel system enables the computer-aided production of physical models based on intraoral scans.

<sup>1</sup> Feature only available for Zfx Evolution Scanner.

To order genuine ZimVie Dental Components  
call your local representative or send an email to  
**dentalCS@ZimVie.com**

**ZimVie Dental Global Headquarters**

4555 Riverside Drive  
Palm Beach Gardens, FL 33410  
Phone: +1-561-776-6700  
Fax: +1-561-776-1272  
[www.ZimVie.com/dental](http://www.ZimVie.com/dental)



Unless otherwise indicated, as referenced herein, all trademarks and intellectual property rights are the property of ZimVie Inc. or an affiliate; and all products are manufactured by one or more of the dental subsidiaries of ZimVie Inc. (Biomet 3i, LLC, Zimmer Dental, Inc., etc.) and marketed and distributed by ZimVie Dental and its authorized marketing partners. ZimVie is an authorized distributor of iTero Products which are manufactured by Align Technology, Inc. Invisalign, iTero, iTero Element, the iTero logo, among others, are the trademarks and/or service marks of Align Technology, Inc. or one of its subsidiaries or affiliated companies and may be registered in the U.S. and/or other countries. For additional product information, please refer to the individual product labeling or instructions for use. Product clearance and availability may be limited to certain countries/regions. This material is intended for clinicians only and does not comprise medical advice or recommendations. Distribution to any other recipient is prohibited. This material may not be copied or reprinted without the express written consent of ZimVie. TiBases (Class IIb), Scanbodies (Class I), Blanks (Class IIb), Tools (Class I), Screws (Class IIb) and Analogs (non medical devices). ZV0905 REV C 06/23 ©2023 ZimVie. All rights reserved.

